



PRODRONE

2026

Product Lineup

Professional Aerial Systems



PRODRONE

Table of Contents

Company Overview

Aircraft Platforms

GT-M

PD6B-Type 3

PD4B-M

PRODRONE RESCUE

Air-Water Hybrid Drone

Flight Control System

PD-GCS



PRODRONE

Company Overview

▶ Mission

To deliver high-reliability drone systems founded on Japanese engineering excellence, enabling safe and effective operations while helping protect the people, infrastructure, and communities of Japan.

▶ History

Founded in Tokyo in 2015 and later relocating its headquarters to Nagoya, Aichi Prefecture, Prodrone develops industrial drones designed for use in environments where conventional drones struggle to operate. With over 70 employees and, as one of Japan's leading industrial drone manufacturers, provides drones for a wide range of missions including logistics, inspections, disaster response, and critical infrastructure.

▶ What We Do

Prodrone develops and manufactures high-reliability unmanned aircraft systems for industrial and mission-critical use. Leveraging in-house engineering across airframes, flight control software, and ground control systems, the company delivers multirotor, single-rotor, and specialized platforms designed to operate in demanding environments. Prodrone supports applications including logistics, inspection, disaster response, and public-safety operations where performance, safety, and reliability are essential.

▶ Engineering the Future

Prodrone is advancing the next generation of unmanned aircraft systems through continuous innovation in airframe design, autonomous flight control, and integrated system engineering. By pushing the boundaries of Japanese drone technology, we are building the foundation for a safer society.

▶ Why Prodrone?

- Japanese Engineering Excellence
- Trusted Partner for Long-Term Operations
- In-House system development
- Mission Focused Platforms

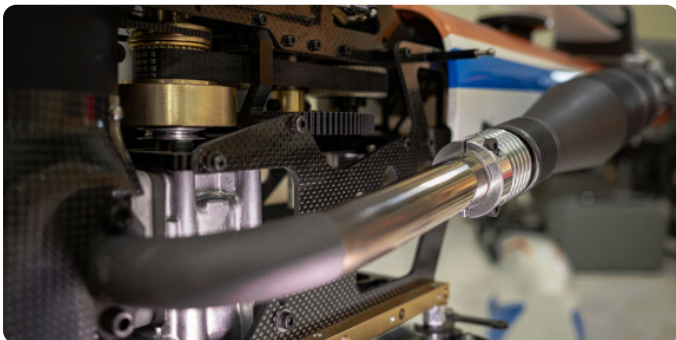
GT-M

Designed for Mission Critical Use



Overview

The GT-M is an industrial helicopter designed for real-world operational use. With long-duration performance enabled by its engine-driven system and a high payload capacity, it supports a wide range of missions—from ISR to various industrial operations.



Field Ready

- Designed for stable operation in real-world environments
- Supports research, proof-of-concept testing, and industrial applications.
- Configured for continuous operation in outdoor conditions.



Modular Airframe

- Designed to support a wide range of payload configurations.
- Airframe structure engineered for maintainability
- Flexible operation adaptable to mission requirements

Specifications

Airframe Length	1570mm	Max Speed	135 km/h (with 0 kg payload, no wind)
Max Takeoff Weight	6500g	Max Flight time	120 minutes (with approx. 2 kg)
Main Rotor Diameter	1770mm	Fuel Consumption	Engine (Mixed Gasoline 1 liter per 60mins.)



PD6B

Multi-use Heavy Lift Drone



Payload 20kg



**Level 3.5
certification**



IP44 Rated



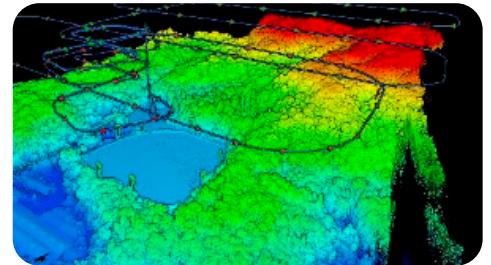
**LTE
Connectivity**



RTK

Use Case

- Disaster Response and Emergency Relief
- Surveying and Mapping
- Logistics and Heavy-Cargo Transport
- Infrastructure Inspection



Options

The lower-unit can be easily attached and removed by simply switching the four pins, and customers can replace it themselves (with some exceptions). We offer three standard units based on proven performance and high demand: the Surveying unit, the Logistics Box (Release Type), and the Logistics Box (Drawer



Specifications

Aircraft Size	2,181mm×2,398mm
Airframe Weight	20.0kg
Propeller Diameter	30 inch
Maximum Flight Time	33 mins w/o payload 15 mins w/7kg payload
Maximum Payload	20kg
Maximum Speed	60km/h
Operational Wind Resistance	12m/s
Battery (Hot-Swap Compatible)	16000mAh x 4

PD4B-M

A Scalable, Modular Drone Platform



Highly Stable Flight

Long Duration Flight

Rapid Deployment

Modular Configuration



Technical Specifications

Motor Shaft Distance: 1300mm
Propellor Diameter: 780mm
Overall Height: 600mm
Airframe Weight: 12.3Kg
Max Takeoff Weight: 23.3Kg
Max Flight Time 35mins w/o payload
20 mins w/5kg payload

Max Payload: 10kg
Max Speed: 60km/h
Operational Wind Resistance:
12m/s



Designed based on real operational feedback

Prioritizing real-world field operation, the airframe structure has been refined based on direct user feedback.

A design focused on transportability, maintainability, and customization enables a modular configuration that flexibly adapts to diverse mission

Variations: Survey, Disaster-Response, Logistics, Wildlife Control, Inspection, and Water-Surface Operations.



Compatible with various sensors

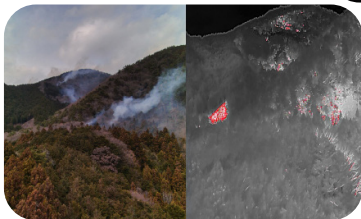
By equipping the platform with surveying instruments and related sensors, it can be used not only for terrain mapping but also for rapidly assessing on-site conditions during disasters. Its high-payload airframe supports a wide range of surveying devices, enabling flexible operation across diverse mission requirements.

PRODRONE RESCUE



**Two-way
Communication**

**LED
Spotlight**



EO/IR Sensor

**A firefighting-specific
rescue drone engineered for Japan's
toughest conditions.**



Key Features

- Dual IR + Zoom Camera System — Provides simultaneous thermal and optical imaging, allowing responders to assess hotspots, locate missing persons, and analyze fire behavior in real time.
- Stable Flight in Harsh Weather — Designed to maintain reliable performance in strong winds and rain, ensuring operation during real disaster conditions when visibility and stability matter most.
- High Payload Capacity (Up to 10 kg) — Supports mission-specific equipment such as sensors, lights, or additional rescue tools, making the platform adaptable to multiple disaster-response scenarios.
- Real-Time Disaster Assessment Capability

Specifications

Airframe Weight (with battery)	13 kg
Maximum Takeoff Weight	23.3 kg
Maximum Payload	10 kg (recommended 5–7 kg)
Maximum Flight Time	Up to 30 minutes (conditions dependent)
Maximum Flight Time	60 km/h
Wind Resistance	10 m/s
Battery	16,000 mAh × 2

Air-Water Hybrid Drone



Specifications

Length: 1,670 mm
Height: 665 mm
Weight: 31 kg
Waterproof Rating: IP55
Wind Resistance: 10 m/s
Current Resistance: ~1 m/s

Flight Time: ~15 min
(with underwater drone)
Underwater Operation:
~1 hour (current-dependent)
Cruising Speed: 40 km/h
Cable Length: 70 m

Features

Remotely operated via LTE, the air-water hybrid drone provides real-time aerial and underwater video, maintains its surface position with GPS and an underwater motor, and can navigate while avoiding vessels. Acoustic signals sent from the underwater unit are received by the aerial drone and combined with GPS to accurately determine the underwater drone's location.



Case Study

In collaboration with the Japan Self-Defense Forces, Prodrone conducted a demonstration mission utilizing our in-house developed Prodrone GCS. During the operation, the system simultaneously monitored mine detection, real-time positioning, depth data, and live video feeds to validate integrated air-water operation capabilities.

PD-GCS

A fully featured, multi-function Japanese-made GCS



Features

- Automated drone flight planning and navigation settings
- 3D map display

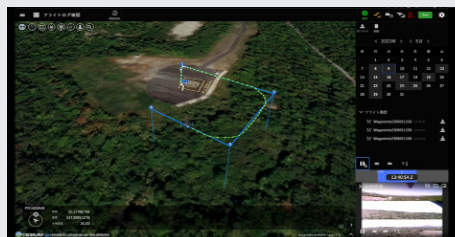
Options

- Integration with third-party drones
- AI and system integration / database connectivity
- Compatibility with various external devices

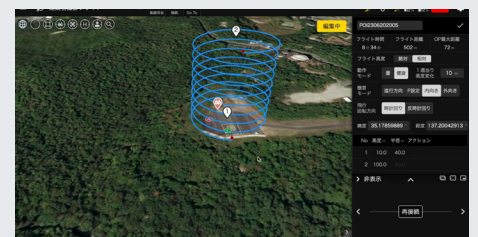
Control, Management, and Automated flight planning



Multi-Drone Control



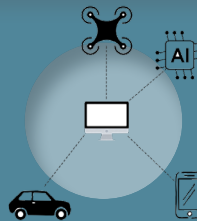
Real-time transmission of flight



Spiral Orbit Mode



A fully integrated package that incorporates all essential functions for autonomous UAV navigation and control.



Seamless integration with external drones and IoT devices allows all mission data to be centrally managed.



AI enhancements allow the system to automatically identify targets from live drone footage.





PRODRONE

<https://www.prodrone.com/jp/>

株式会社 Prodrone

〒468-0014 愛知県名古屋市天白区中平1丁目115

